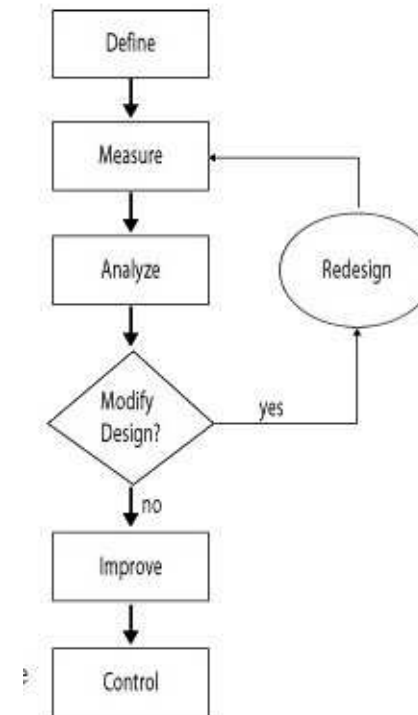


How to identify a mediocre approach – Eg 16

Imagine that you use (or want to use) the following Quality Control approach



How to identify a mediocre approach - Eg 16

Diagnosis 1



Steps	Deliverables	Class	Mitigation
Define	Describe the problem	 Great	Great idea
	Improvement activities	 Medium	Too implicit
	Improvement opportunities	 Medium	
	Project goals	 Poor	2 mediocre deliverables
	Customer requirements	Irrelevant as last deliverable was pointless	
Measure	Process performance		
Analyse	Root causes of variation		
Improve	Defects		
	Define possible corrective actions		
Control	Monitor		

Conclusion: Find a better approach

How to identify a mediocre approach Eg 16

Explanation

Why is it pointless?






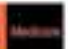


1. Step 1 – Define
 - 1) Describe the problem – A great idea. However it may take a while to articulate the problem. Writing 'there is a strange knocking sound when ever the throttle is opened' is hardly explicit, thus rendering the deliverable mediocre
 - 2) Improvement activities – Relies on brainstorming activities. Hence mediocre
 - 3) Improvement opportunities – Relies on brainstorming activities. Hence mediocre
 - 4) Project goals – Pointless as there were 2 mediocre steps before this one
 - 5) Customer requirements – Irrelevant as previous step was pointless
2. Steps 2 through 5 – Irrelevant as previous step was irrelevant

Conclusion: Find a better approach & software product

How to identify a mediocre approach - Eg 16

Final Diagnosis



Steps	Deliverables	Class	Mitigation
Define	Describe the problem	 	Could be mediocre
	Improvement activities	 	Too implicit
	Improvement opportunities	 	2 mediocre deliverables
	Project goals	Irrelevant as last deliverable was pointless	
	Customer requirements		
Measure	Process performance		
Analyse	Root causes of variation		
Improve	Defects		
	Define possible corrective actions		
Control	Monitor		

Conclusion: Find a better approach & software product